

EMERGE

Home / Art / Emerge / Emerge 2012

Emerge 2014

Emerge 2012

Emerge 2010

Emerge 2008

Emerge 2006

Emerge 2004

Emerge 2012



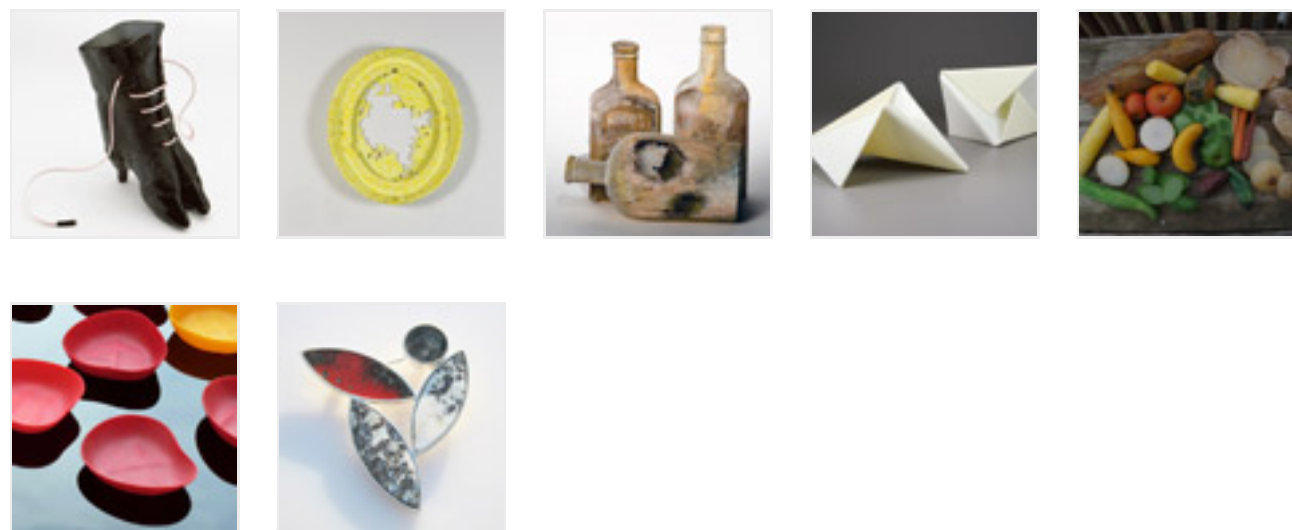
Emerge 2012 was Bullseye's seventh biennial, juried kiln-glass exhibition for emerging artists in kilnformed glass. The competition attracted more than 350 entrants from more than 30 countries. Jurors were Laura Addison, Silvia Levenson and Klaus Moje.

The *Emerge 2012* exhibition ran at [Bullseye Gallery](#) in Portland from April 4 to June 23, 2012. Selected award-winning works later travelled to the New Mexico Museum of Art and to Bullseye Resource Center Bay Area.

A full-color exhibit catalog [Emerge 2012: A Showcase of Rising Talents in Kiln-glass](#) is available from Bullseye's Online Store, Bullseye Gallery or any Bullseye Resource Center.

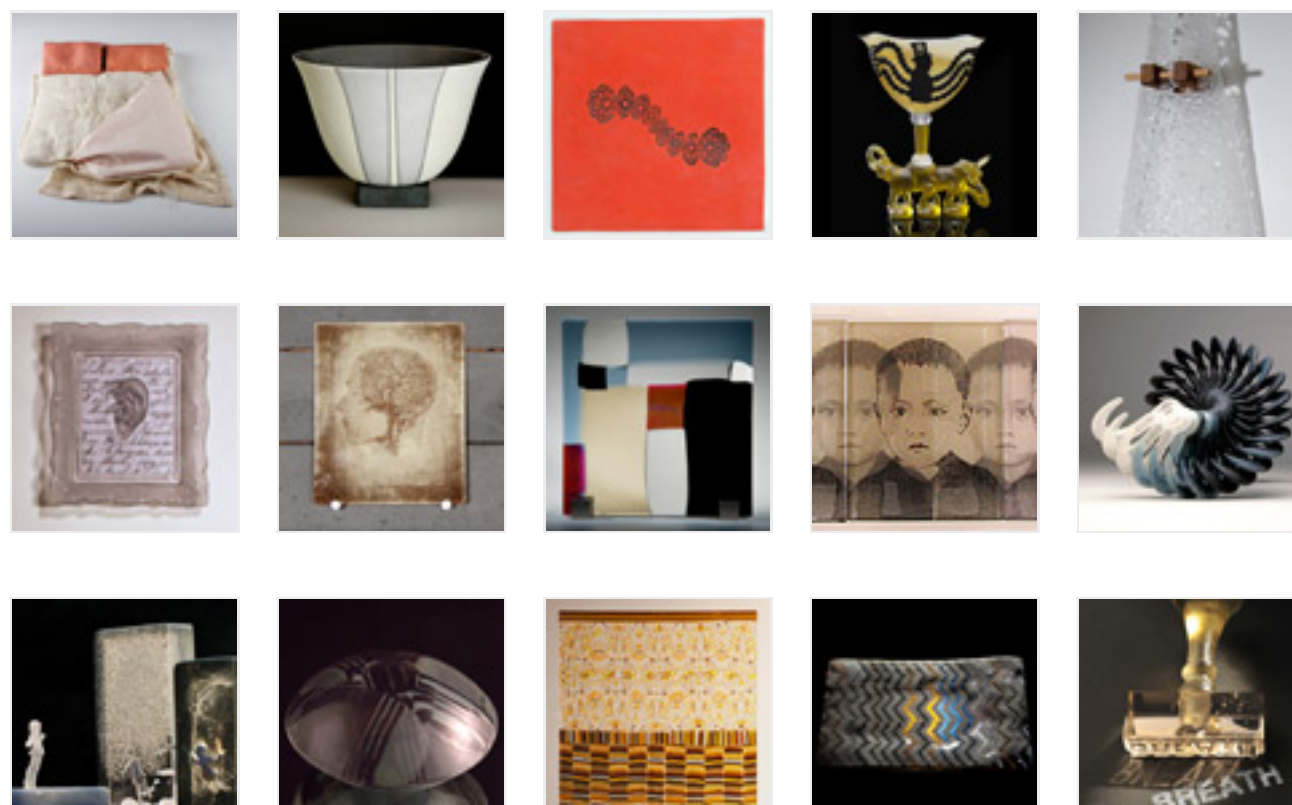
Emerge 2012 Prize Winners

(For more information about these works, contact [Bullseye Gallery](#).)



Finalists

(For more information about these works, contact [Bullseye Gallery](#).)





Antonio Sciacca & Eduardo Nieto, *Avionet*, 2011. Kilnformed glass, 7 x 35 x 15 inches.



 [Email Newsletter](#)

 [Facebook](#)

 [Twitter](#)

 [RSS](#)

 [Studio App](#)